

**From:** [Mulbarton Parish](#)  
**To:** [Hornsea Project Three](#)  
**Subject:** HORNSEA PROJECT THREE OFFSHORE WIND FARM (EN010080)  
**Date:** 23 January 2019 17:13:03  
**Attachments:** [Development Management Policies Document Maps 4.6 - NSBPZ.pdf](#)

---

HORNSEA PROJECT THREE OFFSHORE WIND FARM (EN010080)

Good afternoon,

Please see attached map of the Norwich Southern Bypass Protection Zone (NSBPZ); although discussed previously it has a bearing on the site visits and hearings taking place next week, specifically a site outside of the zone is to be preferred.

Kind regards

Anne

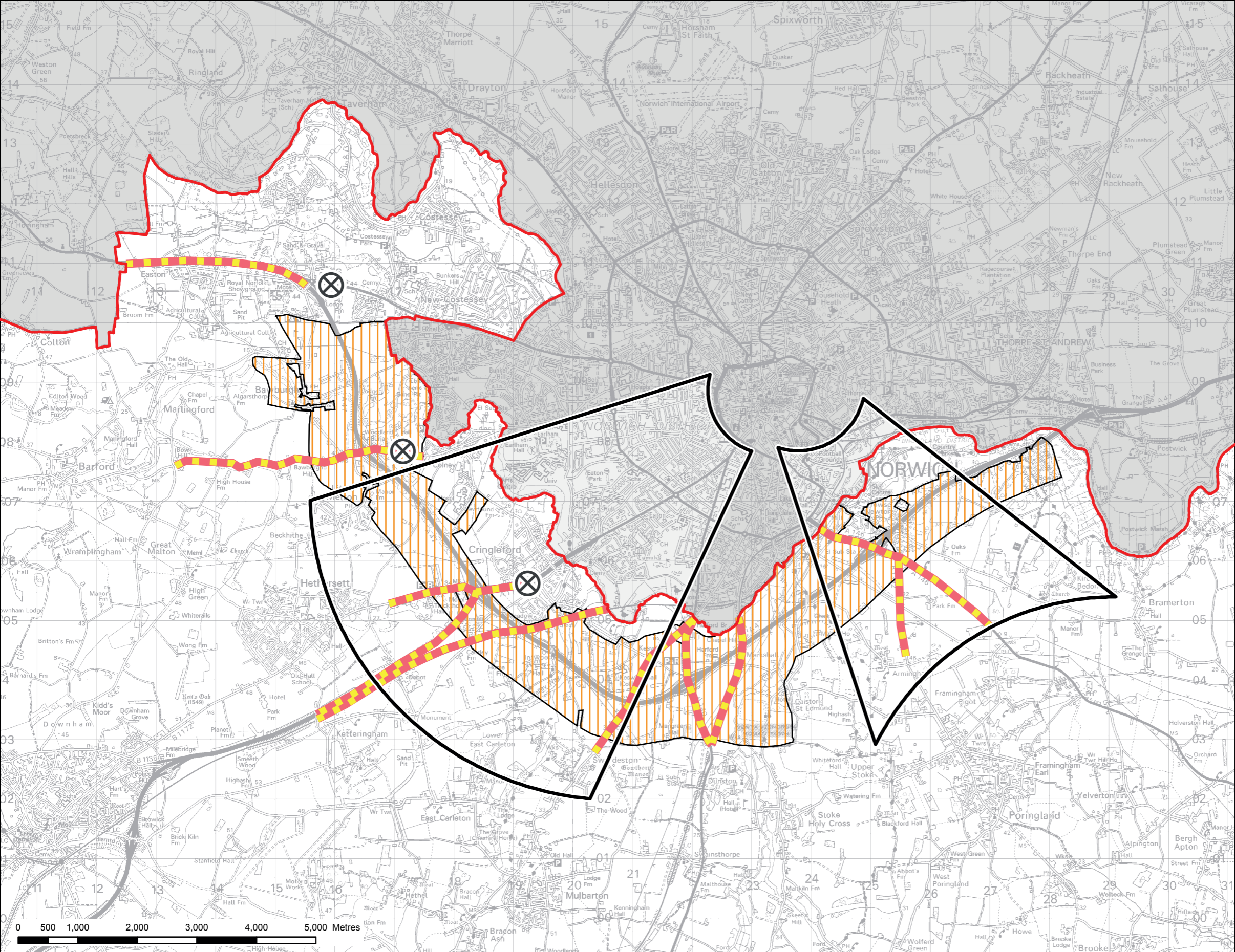
Anne Phillips  
Parish Clerk, Mulbarton Parish Council  
Parish Office, The Common, Mulbarton, NR14 8AE  
01508 578134  
[www.mulbartonpc.org.uk](http://www.mulbartonpc.org.uk)






---

This email has been scanned by the Symantec Email Security.cloud service.  
For more information please visit <http://www.symanteccloud.com>

---

**MAP 4.6** Policy DM.4.6 The Landscape Setting of Norwich - with NSBPZ, Undeveloped Approaches, Viewing Cones & Gateways



-  **South Norfolk District Boundary**
-  **Southern Bypass Protection Zone**
-  **View Cones towards Norwich**
-  **Undeveloped Approaches**
-  **Gateways into Norwich**



Scale at A3:  
1:65,000

